

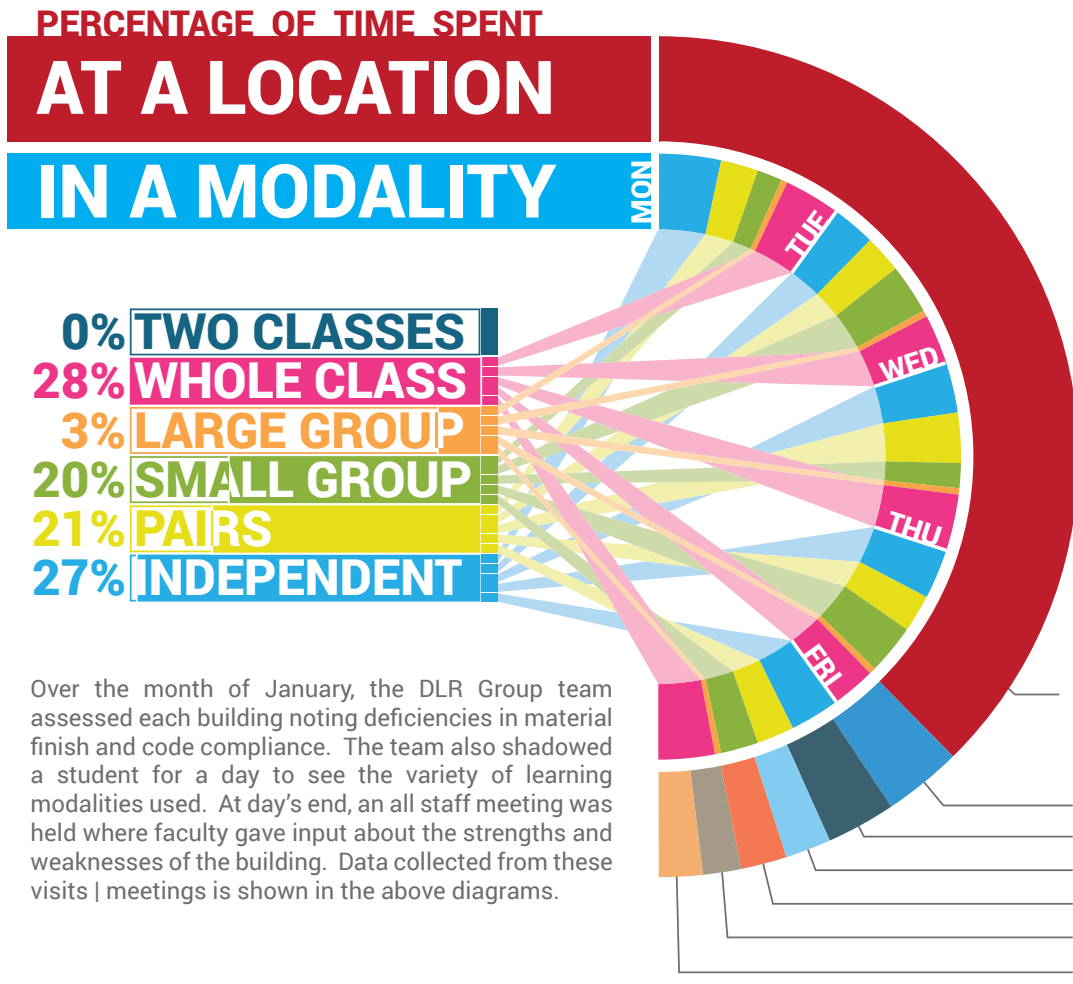
Hough Street Elementary School



BLUEPRINT 220

A future-ready facilities plan

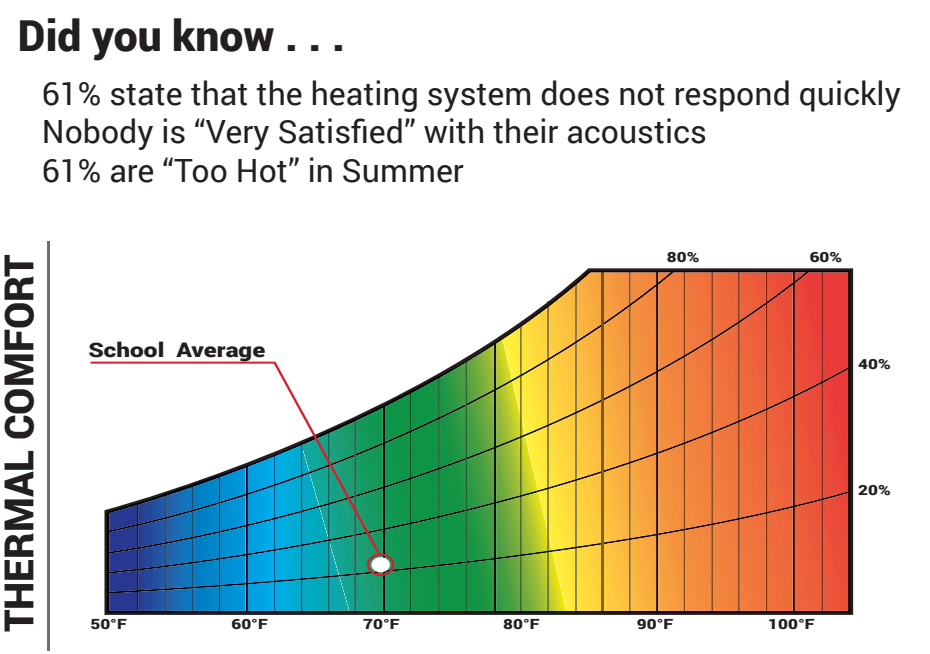
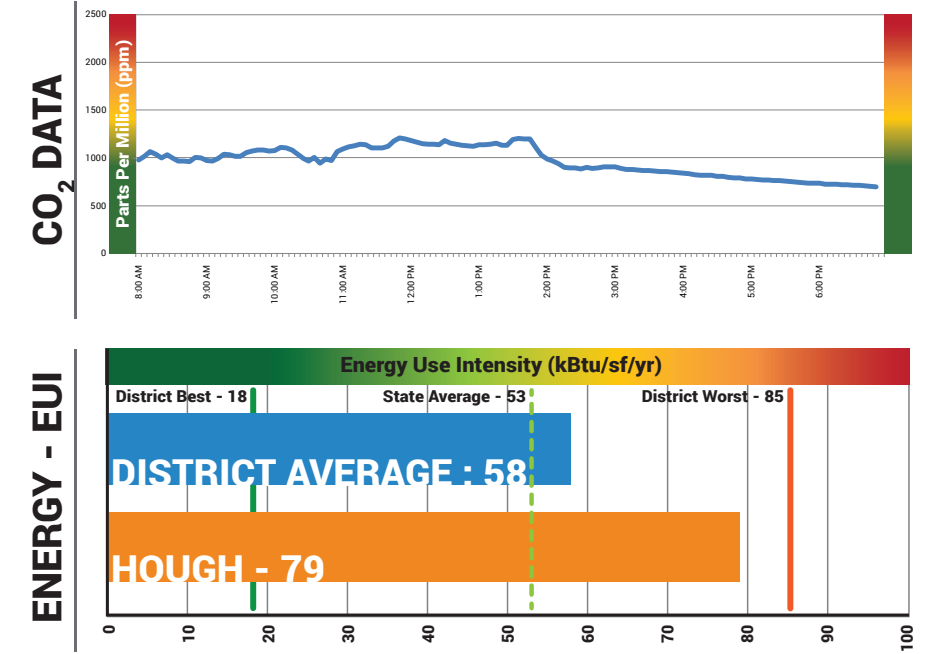
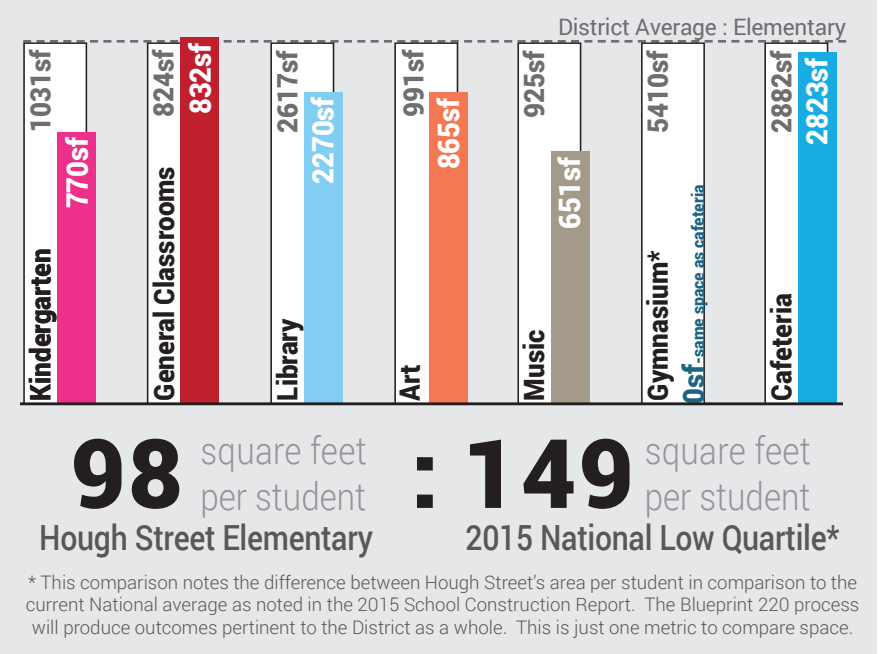
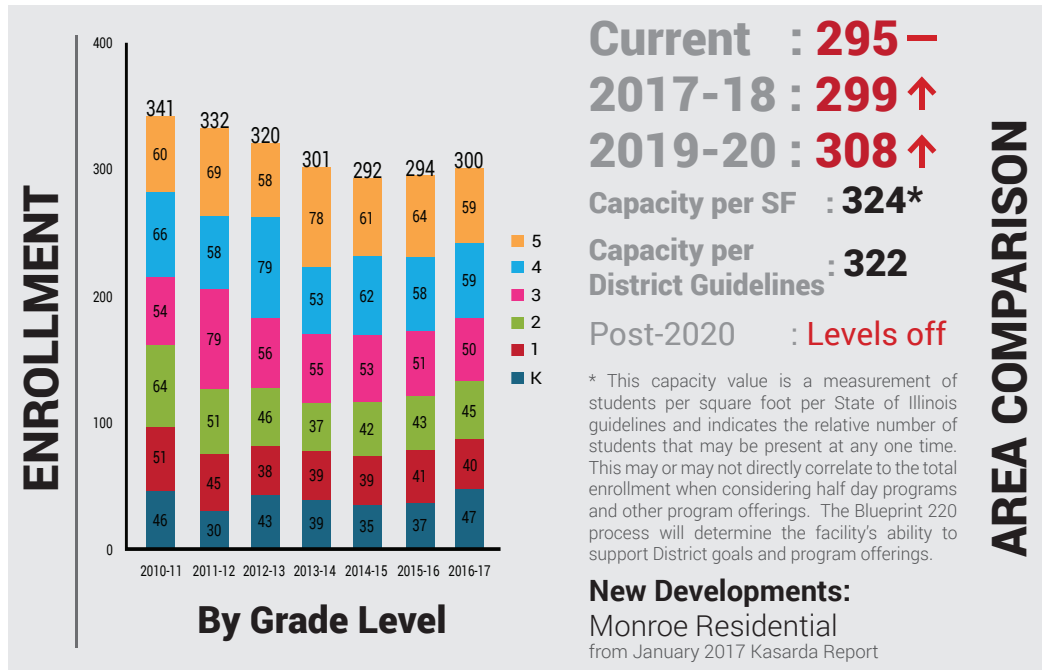
Hough Street Elementary School was built in 1966 with an addition in 2000 on a 2-acre site. The school's gross square footage is 28,700 square feet, with an overall capacity of 324 students.



- ### TOP 5 TAKE-AWAYS
- 1 Kindergarten spaces are too small
 - 2 Lack of stage limits performance
 - 3 No dedicated music room or gym
 - 4 No shared spaces for groups to meet
 - 5 Lacking storage

- ### BUILDING CONDITION
- 1 Mechanical roof top units are past expected service life
 - 2 Only one accessible entry
 - 3 Kiln is not enclosed
 - 4 Replace controls - upgrade to DDC
 - 5 Split masonry at some windows

75% CLASSROOM
 6% CAFETERIA
 6% GYM
 4% LIBRARY
 4% ART
 3% MUSIC
 3% OUTSIDE



How is this information collected?

The DLR Group team collected data through the use of an environmental sensor. The sensor was placed in a predetermined room where it took in data from one to five days. The data was then analyzed using Excel.

