

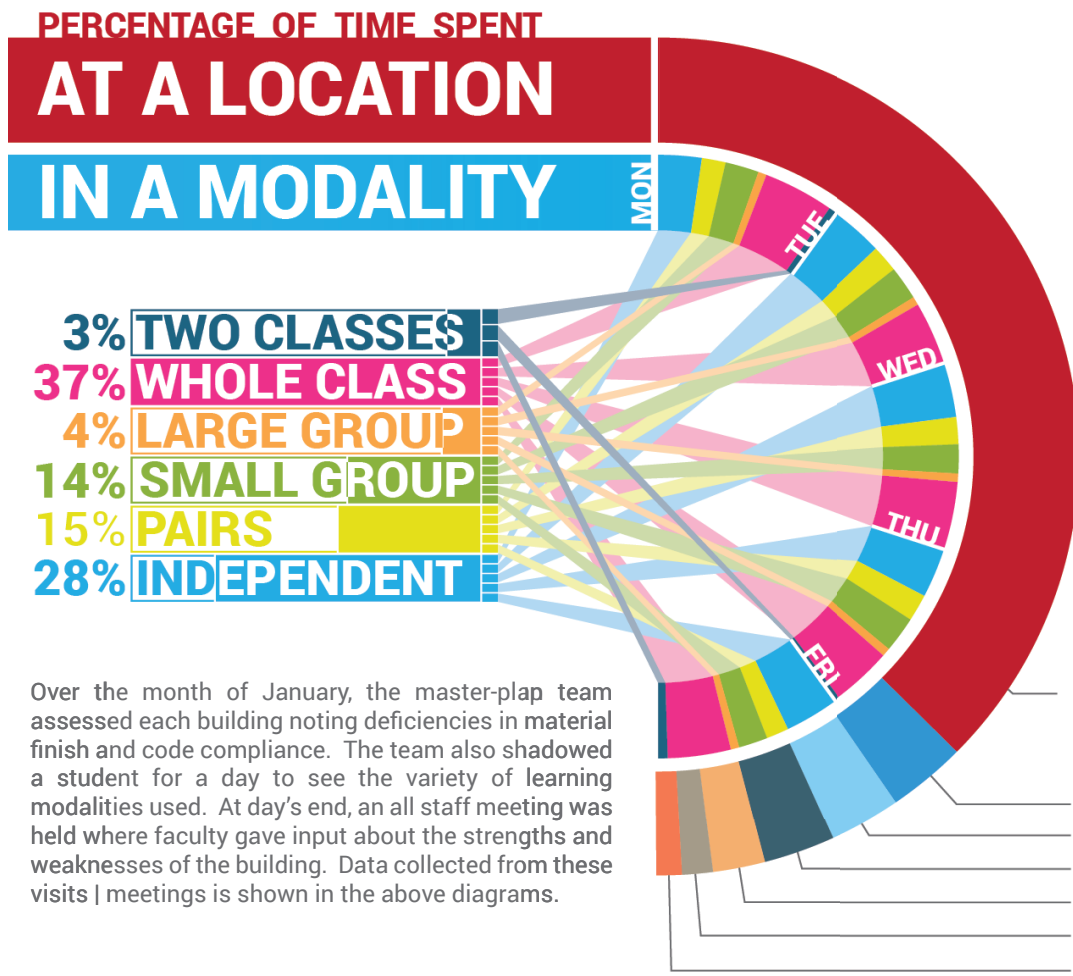
Roslyn Road Elementary School



BLUEPRINT 220

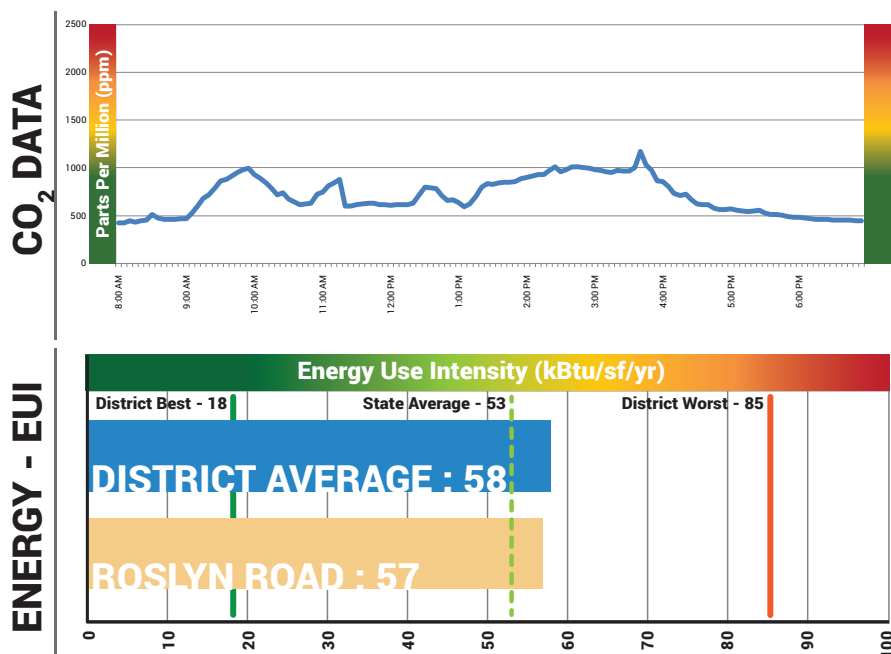
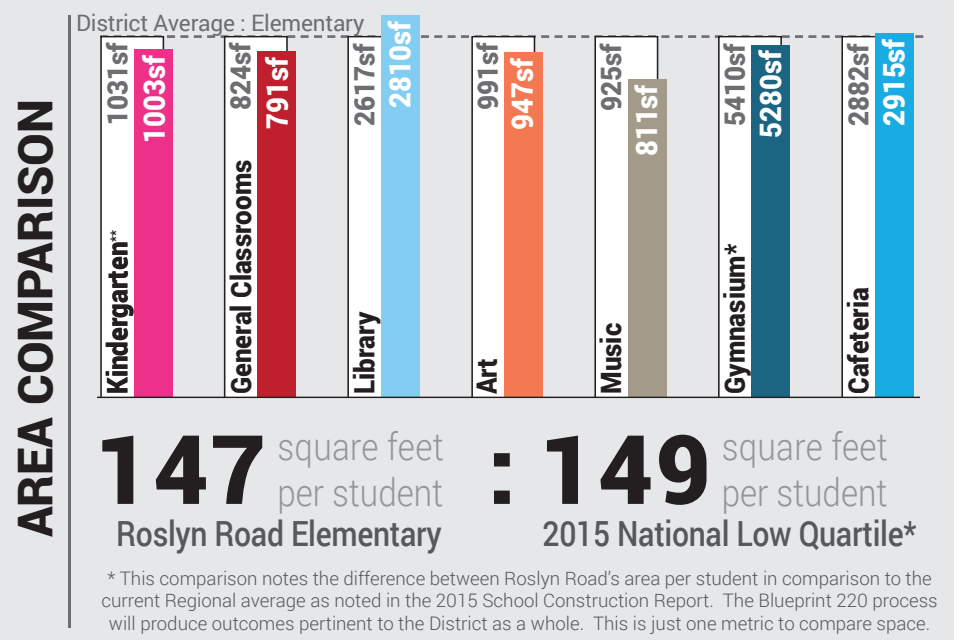
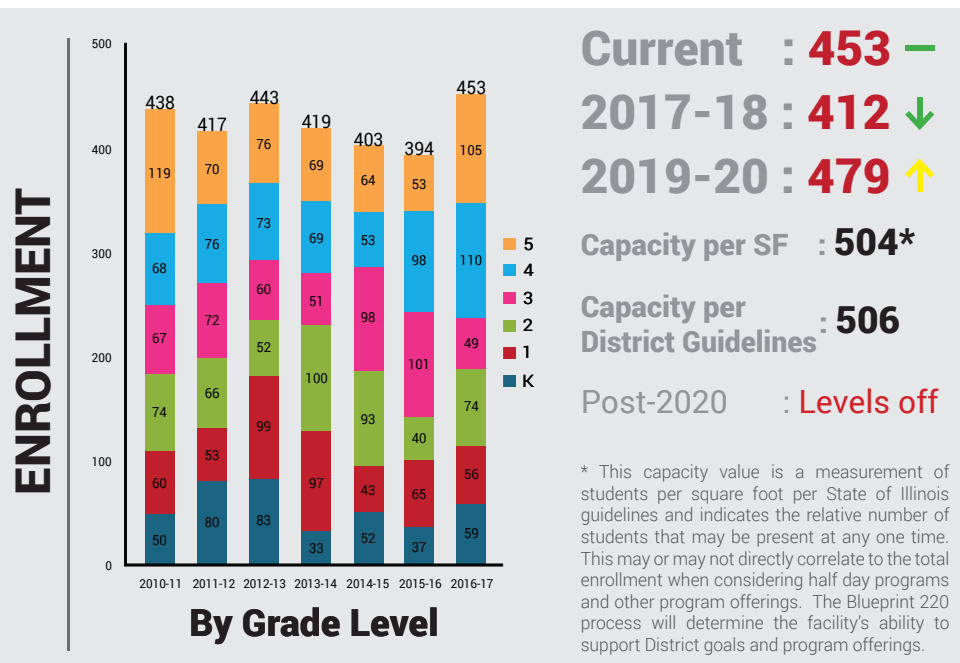
A future-ready facilities plan

Roslyn Road Elementary School was built in 2002 on a 9-acre site. The school's gross square footage is 66,500 square feet, with an overall capacity of 504 students.



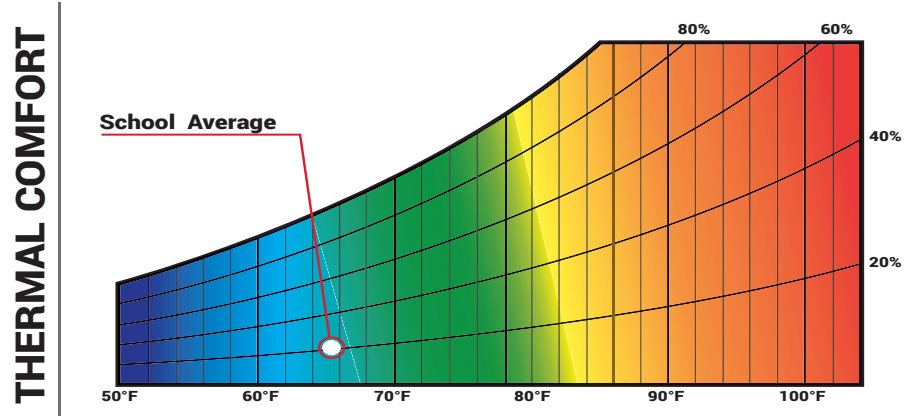
- ### TOP 5 TAKE-AWAYS
- 1 Large temperature variations
 - 2 Room lighting is too bright
 - 3 Furniture variety would aid teaching
 - 4 Pod areas are flexible
 - 5 Building storage is lacking

- ### BUILDING CONDITION
- 1 Pod exits are not connected to accessible route
 - 2 Staining on exterior brick
 - 3 Cooling system is at expected service life
 - 4 Replace uninterrupted power system with generator
 - 5 Replace phone system



Did you know . . .

- 90% have access to daylight
- 57% feel heating system does not respond quickly enough
- "I work in various areas and temperatures are inconsistent"



How is this information collected?

The master-plan team collected data through the use of an environmental sensor. The sensor was placed in a predetermined room where it took in data from one to five days. The data was then analyzed using Excel.

